

BLANKENBAKER STATION



Summer 2015



HOLLENBACH OAKLEY

Building a Legacy of Distinction

Hollenbach-Oakley
P.O. Box 7368
Louisville, KY 40257

502 253 1200
hollenbach-oakley.com



New Neighbors

The new **Xscape** Multi-Plex movie theatre, visible from I-64, is due to open this Fall. The theatre will have 14 screens viewed from plush leather recliners. Two of the largest screens in Louisville and the latest sound and picture technology are set to make the new movie theater off Blankenbaker Parkway the premiere theater in Louisville.

Eurofins new 60,000 square foot facility is nearing completion at the corner of Plantside Drive and Schutte Station Place. Eurofins is an international group of laboratories headquartered in Luxembourg, providing testing and support services to the pharmaceutical, food, environmental and consumer products industries and to governments.

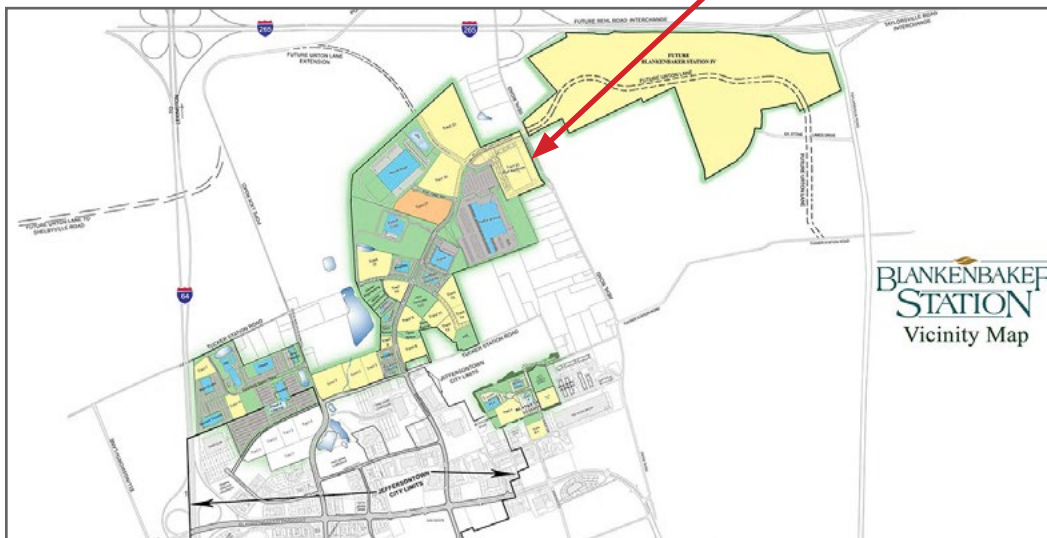
In Phase II, **Noah's All Life Event Center** has opened their new 10,000 square foot event venue. They're located on Plantside Drive next to Van Zandt Emrich and Cary.

FedEx Ground is well under way. This regional support facility is among the largest in Blankenbaker Station. They plan to have the 315,000 square foot facility operational by year end.

The **Plantside Drive extension** is nearing completion. Currently allowing access to available 9 to 20 acre sites with plans already approved for a distribution facility up to 315,000 square feet.



315,000 SF Pre-Approved



WEB LINKS

- | Blankenbaker Station |
- | Welcome | Vicinity Map |
- | Phase I | Phase II | Phase III |